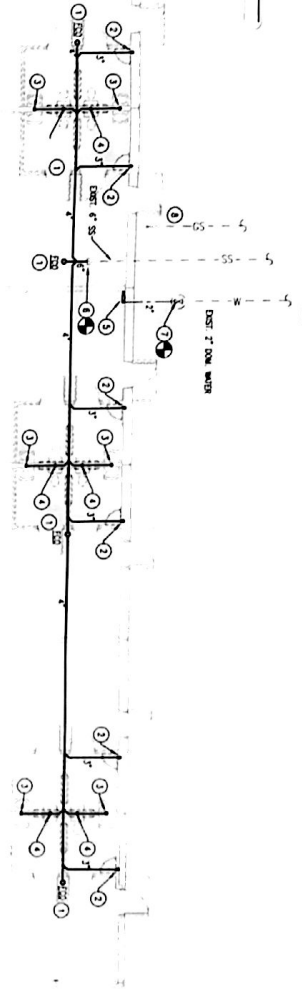


SEE SHEET P101 FOR SFT UNITS

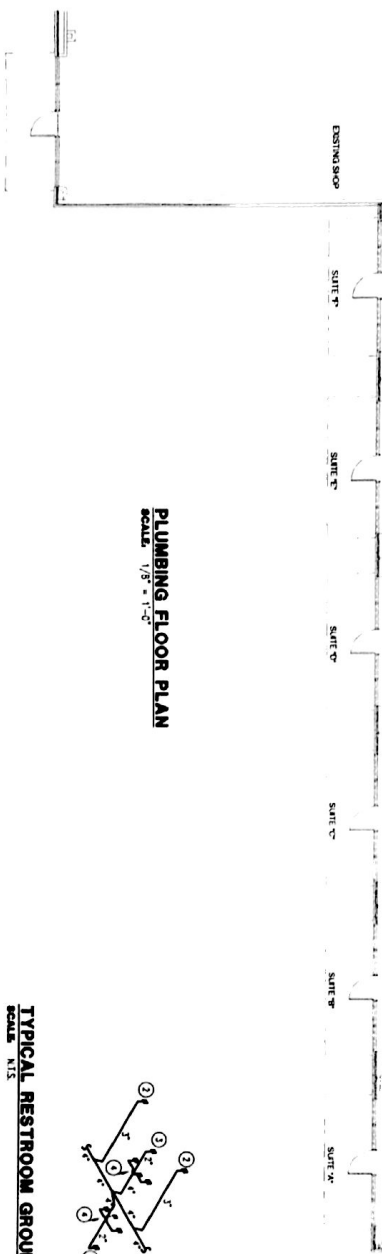


- GENERAL NOTES**
- A. REFER TO SHEET P100 FOR ADDITIONAL GENERAL NOTES
  - B. REFER TO SFT UNITS SHEET FOR ADDITIONAL INSTALLATION REQUIREMENTS AND DETAILS
  - C. CONNECTIONS TO FIELD ASHBY ALL EXISTING STEEL, DUCTWORK, AND DUCTWORK PRIOR TO BEGINNING CONSTRUCTION

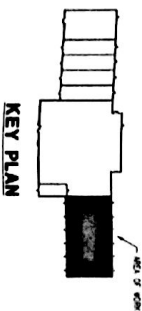
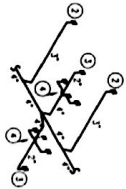
**KEYED NOTES DEMOTED BY ○**

- 1. INITIAL FLOOR CLEANOUT IN TRAPPED FLOOR
- 2. 2" DIA. AND 1/2" DIA. 7" SANDWICH WALL FOR CONNECTION OF 1" DIA. SINK AND
- 3. 2" DIA. AND 1/2" DIA. 7" SANDWICH WALL FOR CONNECTION OF LAVATORY. DISCONNECT WALL LOCATION AND INDICATE ON PLUMBING PLAN
- 4. 2" DIA. AND 1/2" DIA. 7" SANDWICH WALL FOR CONNECTION OF FLOOR WALL. DISCONNECT WALL LOCATION AND INDICATE ON PLUMBING PLAN
- 5. INITIAL SINK/FAUCET PREVENTER WITH 1/2" DIA. 1/2" SINK WITH A 1/2" DIA. 1/2" SINK. INITIAL SINK/FAUCET PREVENTER WITH 1/2" DIA. 1/2" SINK WITH A 1/2" DIA. 1/2" SINK. INITIAL SINK/FAUCET PREVENTER WITH 1/2" DIA. 1/2" SINK WITH A 1/2" DIA. 1/2" SINK.
- 6. CONNECT NEW 1" SANDWICH WATER LINE TO EXISTING WATER LINE
- 7. CONNECT NEW 1" SANDWICH WATER LINE TO EXISTING WATER LINE

**PLUMBING FLOOR PLAN**  
SCALE: 1/8" = 1'-0"



**TYPICAL RESTROOM GROUP RISER DIAGRAM**  
SCALE: N.T.S.



	<p><b>Carter-Burgess</b> ARCHITECTS</p> <p>713 West Second Street, Little Rock, Arkansas 72201 Office: 501.372.0079 Fax: 501.372.2664</p>	<p><b>NEW BOSTON ROAD RETAIL ADDITION</b> NEW BOSTON ROAD AND SOUTH AKIN AVENUE Texarkana, Texas</p>	<p><b>TIMOTHY S. YELVINGTON ARCHITECT</b></p> <p>713 West Second Street, Little Rock, Arkansas 72201 Office: 501.372.0079 Fax: 501.372.2664</p>
<p>REVISIONS   DATE</p>	<p><b>PLUMBING FLOOR PLAN</b></p>	<p>DATE: 8-14-06 1032 E</p>	<p>DATE: 8-14-06 1032 E</p>
	<p>TIMOTHY S. YELVINGTON ARCHITECT</p>	<p>DATE: P201 3</p>	<p>DATE: P201 3</p>
		<p>SHEET 3 OF 3</p>	<p>SHEET 3 OF 3</p>