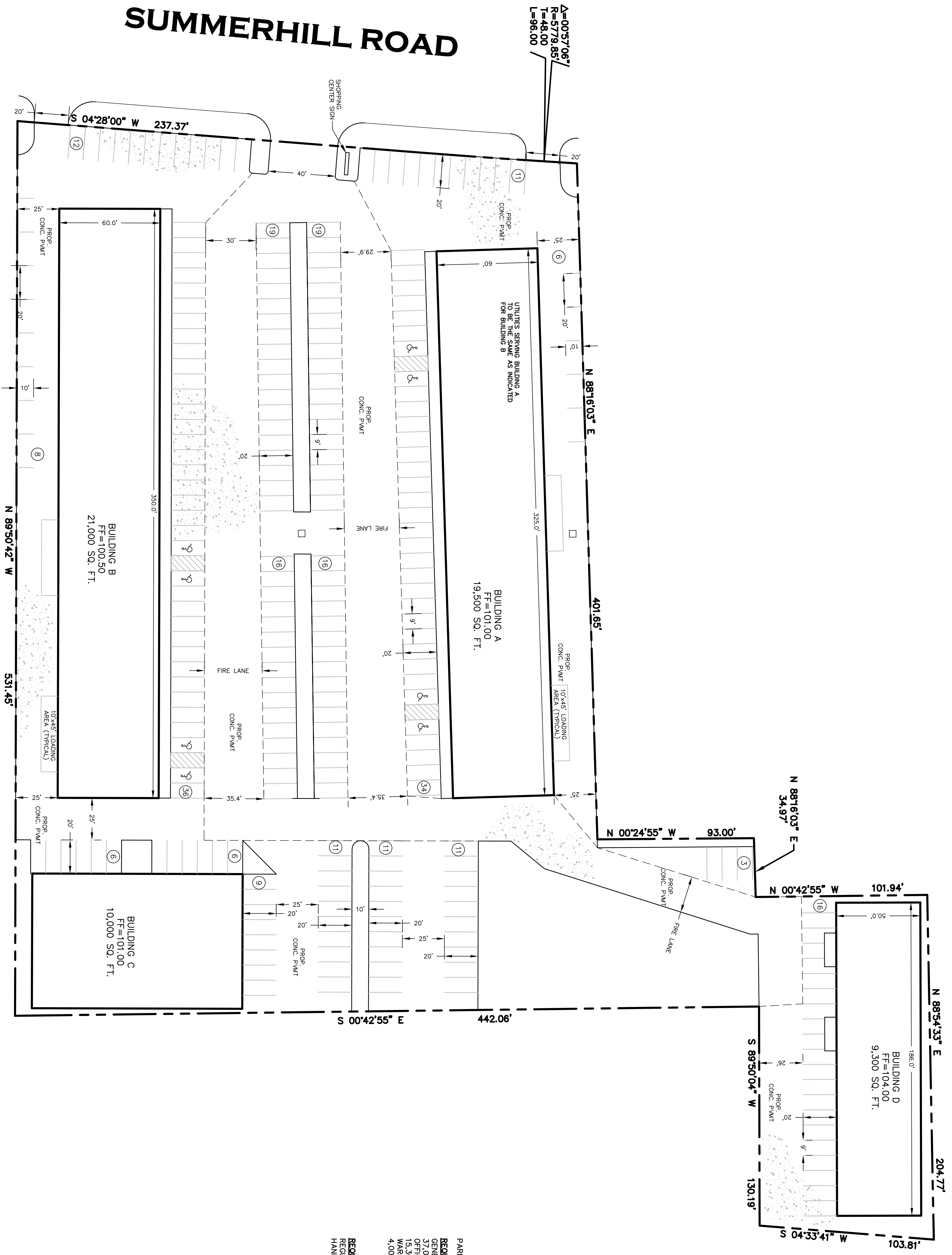
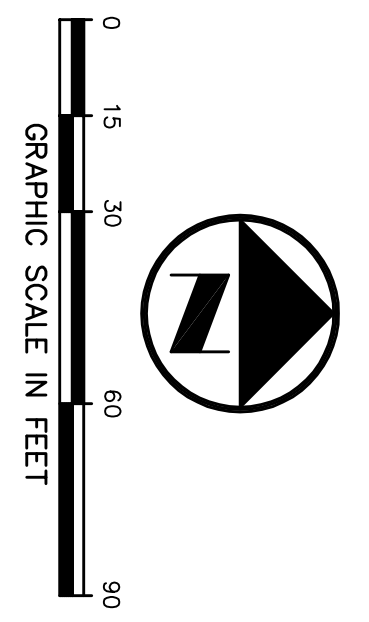


SUMMERHILL ROAD



Δ=00°57'06"
 R=579.85
 T=48.00
 L=96.00

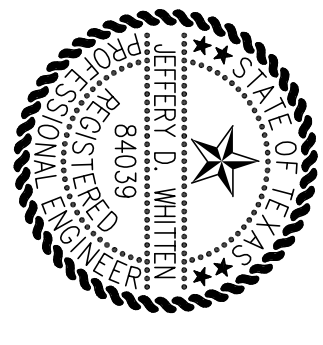


PARKING CALCULATIONS:

REQUIRED PARKING	
GENERAL RETAIL	185 SPACES
37,000 SF. (1 SPACE/200 SF)	
OFFICE	51 SPACES
15,300 SF. (1 SPACE/300 SF)	
WAREHOUSE:	4 SPACES
4,000 SF. (1 SPACE/1000 SF)	
TOTAL	240 SPACES
REQUIRED PROVIDED	
REGULAR SPACES	242 SPACES
HANDICAP SPACES	8 SPACES
TOTAL	250 SPACES

- NOTES:**
1. ALL PARKING SPACES TO BE 9'-FOOT WIDE AND 20'-FEET LONG.
 2. ALL SITE PAVING SHALL BE 3000 PSI CONCRETE PAVEMENT.
 3. UTILITIES SERVING BUILDING A TO BE MAINTAINED AS INDICATED FOR BUILDING B.
 4. UTILITIES SERVING BUILDING A TO BE MAINTAINED AS INDICATED FOR BUILDING C.
 5. ALL WATER INSIDE BUILDING TO BE COPPER, INSTALLED OVERHEAD AND INSULATED AND SIZED AS SHOWN.
 6. WATER LINES INSTALLED ON SITE TO BE PVC 8000 OR 18" CLASS 150.
 7. SANITARY SEWER SERVICE LINES TO BE PVC 8" OR 12" SIZED AS SHOWN.
 8. SANITARY SEWER SERVICE LINES TO BE PVC 8" OR 12" SIZED AS SHOWN.

THE SEAL APPEARING ON THIS DOCUMENT WAS AUTHORIZED BY JERRY D. WHITTEN, P.E. 84039 ON 03/15/2000 FOR THE CITY OF TEXARKANA, TEXAS. ENGINEER IS AN OFFENSE UNDER THE TEXAS ENGINEERING PRACTICE ACT.



WHITTEN CIVIL ENGINEERING, INC.
 3001 Richmond Road, Suite C, Texarkana, Texas 75503
 P-903.334.8677, F-903.334.8975
 jwhitten@wce@tkk.net

ENGINEERING SITE PLAN

3400 SUMMERHILL ROAD
 JAMAN INVESTMENTS, L.L.C.
 AVARD-ABBOTT PROPERTIES
 CITY OF TEXARKANA, TEXAS

DESIGN	DRAWN	DATE	SCALE	NOTES	FILE	NO.
DW	DW	MARCH 2000	1"=30'			