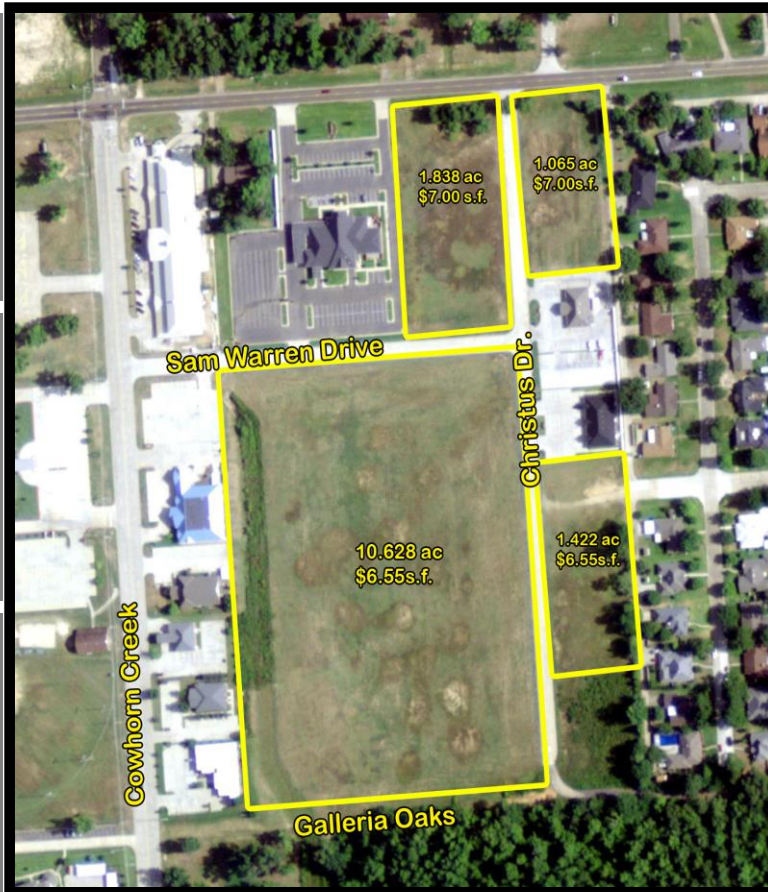
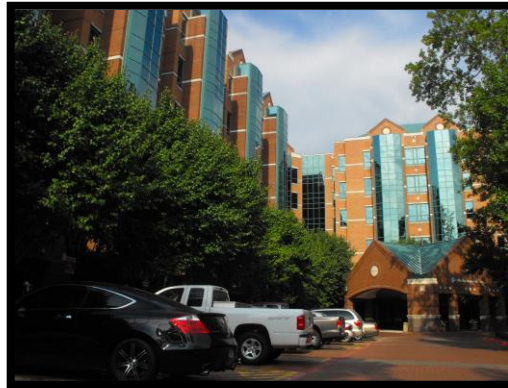
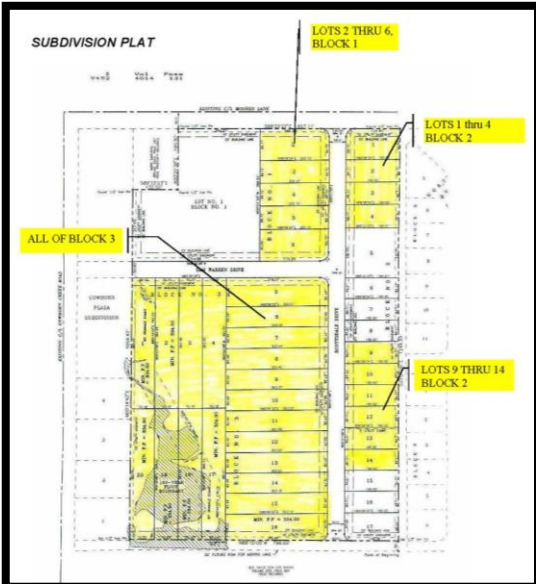


For Sale  
**Texarkana, Texas**  
 Master Planned Medical District



**Moores Lane  
 at Christus Drive/Galleria  
 Oaks**

- Fast Growing Area
- Located just North of Christus St. Michael Hospital
- 1.838 acres  
7.00 s.f.
- 1.065 acres  
\$7.00 s.f.
- 10.628 acres  
\$6.55 s.f.
- 1.422 acres  
\$6.55 s.f.



**For Further Information:**

**Jerry Brewer**  
 903.793.2666 office  
 903.793.3094 fax  
 903.691.0941 cell  
 jerry@amreal.com  
 www.amreal.com



The information contained herein has been provided to us by the owner of the property or other sources we deemed to be reliable. We have no reason to doubt its accuracy, but we do not guarantee it. All information should be verified prior to purchase or lease of property.